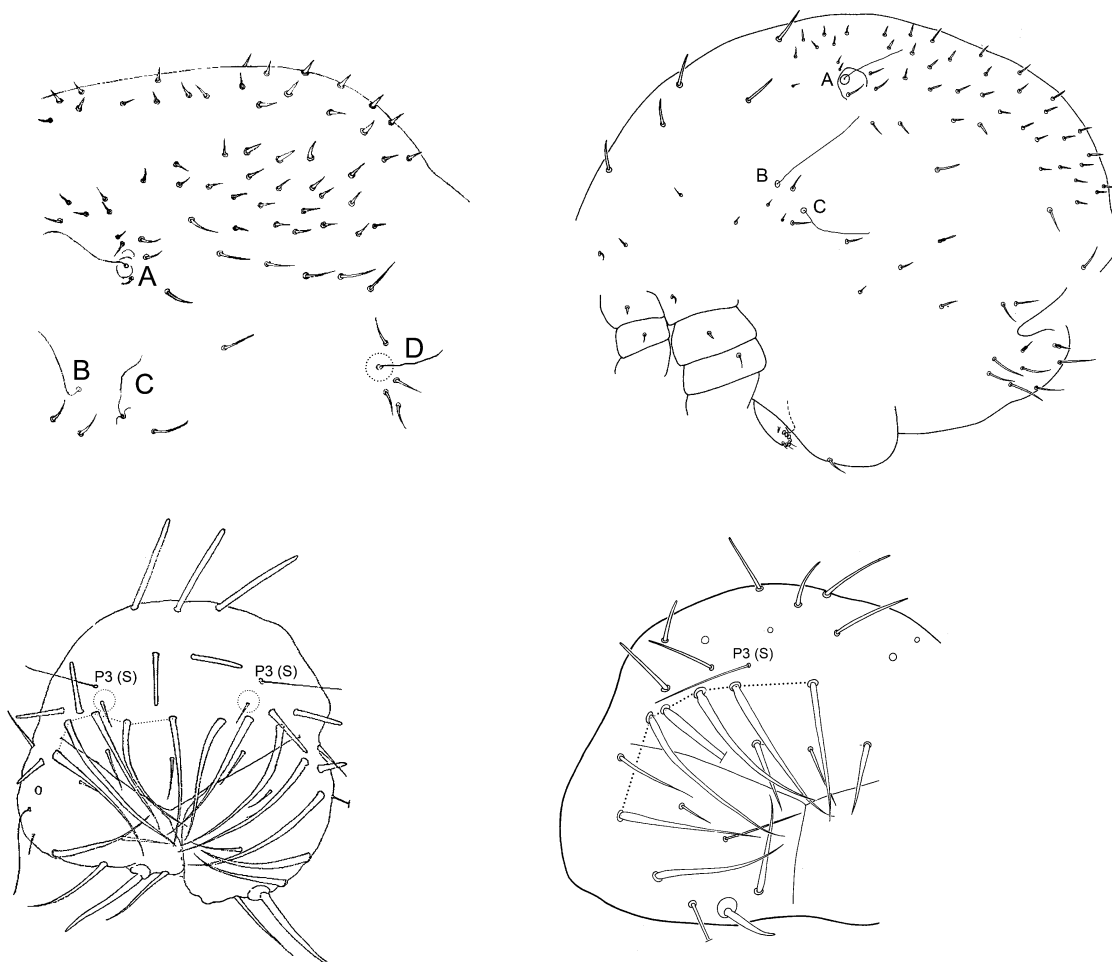


# Dicyrtomidae

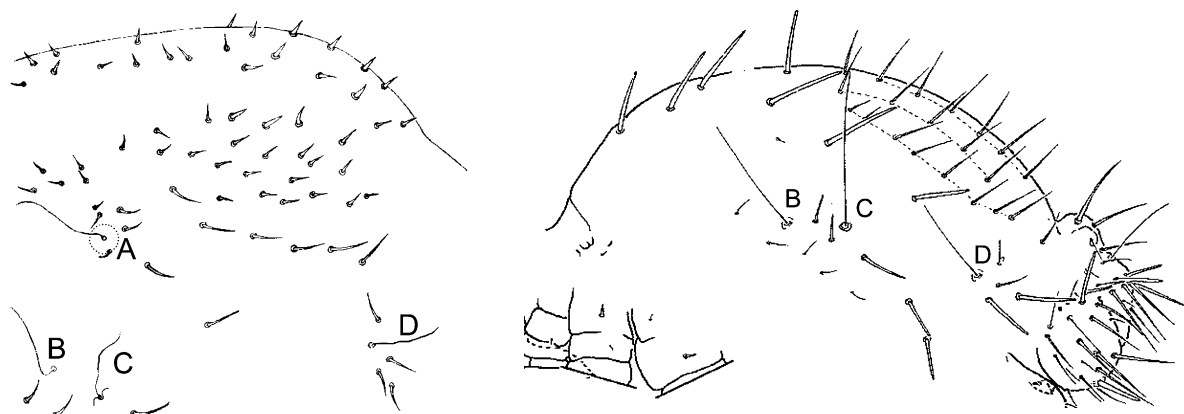
## Key to the genera of the world

after Synopses of G.Bretfeld, 1999, illustrated by M.Potapov, 2020 with Ellis, 1974; Bretfeld, 1996; Itoh & Zhao, 1993; Fjellberg, 2007; Snider, 1990; Uchida, 1944, 1952; Yosii, 1970; Yosii & Lee, 1963; Weiner & Betsch, 1992

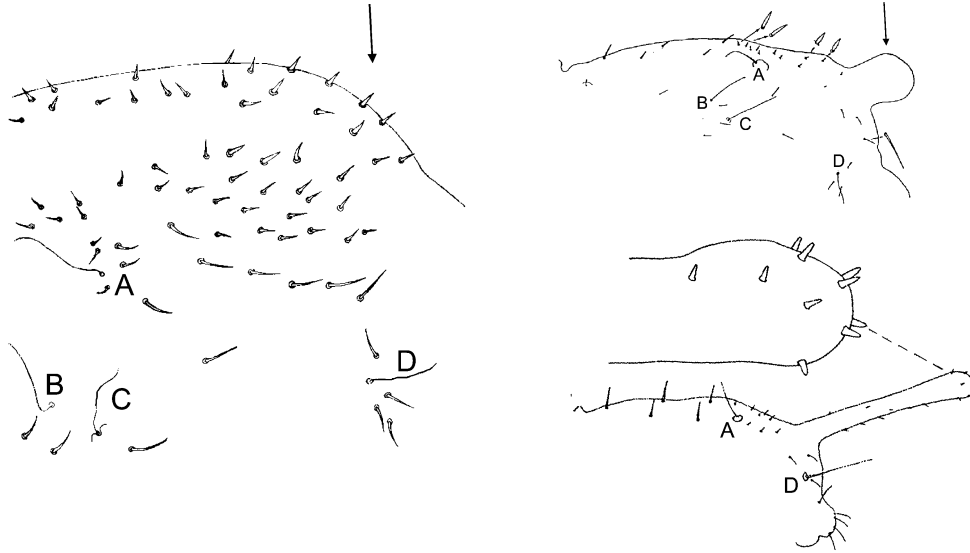
1. Bothriotrichia D always present, sensillum P3 (S) of Abd VI not directly anterior to circumanal setae (Ptenothricinae) ..... 2
- Bothriotrichia D missing from 2-nd instar to adult, sensillum P3 (S) of Abd VI directly anterior to circumanal setae (Dicyrtominae)..... 4



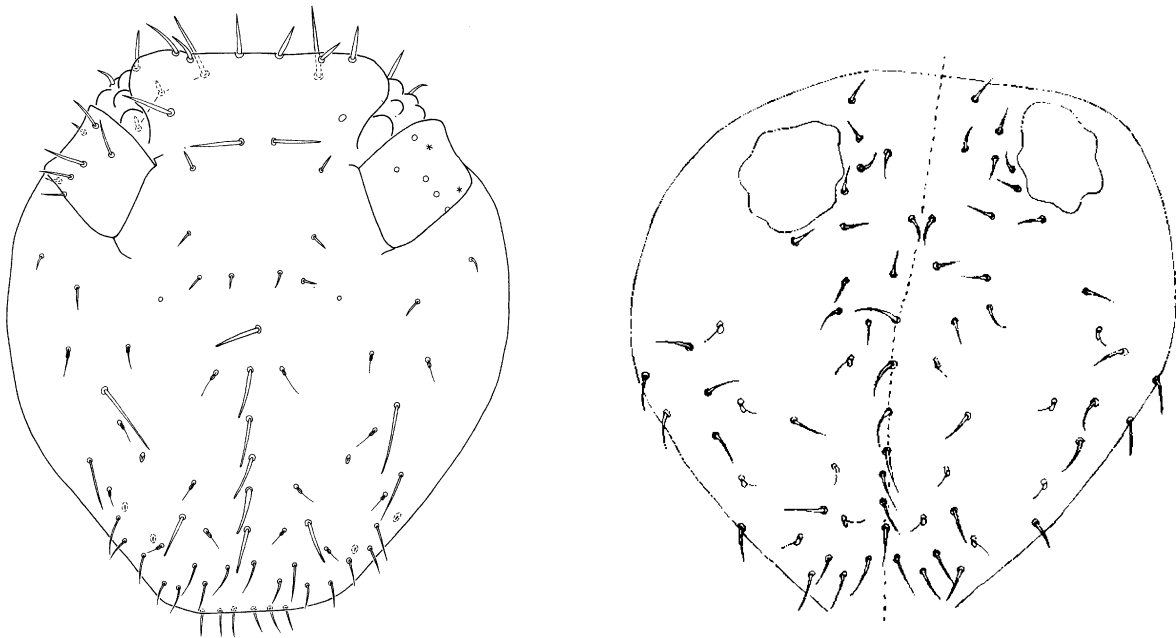
2. Bothriotrichia A present, large abdomen posteriorly with short spines ..... 3
- Bothriotrichia A missing, large abdomen posteriorly with only normal setae .....  
 ..... Bothriovulsus Richards, 1968  
 type species: *Ptenothrix pineolae* Wray, 1946; USA



- 3 Large abdomen of normal globular form, posteriorly with many short spines ..... *Ptenothrix* Börner, 1906  
 type species: *Podura atra* Linnaeus, 1758; Europe
- Large abdomen posteriorly with prominent short or long protuberance with few pairs of short spines ..... *Papirioides* Folsom, 1924  
 type species: *Papirioides jacobsoni* Folsom, 1924; Sumatra



- 4 Head and anterior of large abdomen with setae or spines of normal setal length or longer ..... 5
- Head and anterior of large abdomen with only minute setae ..... 8

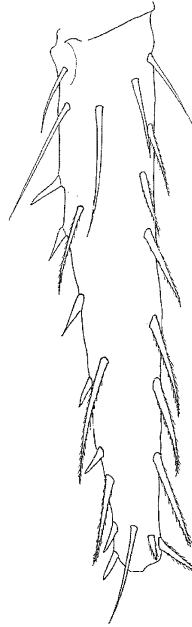
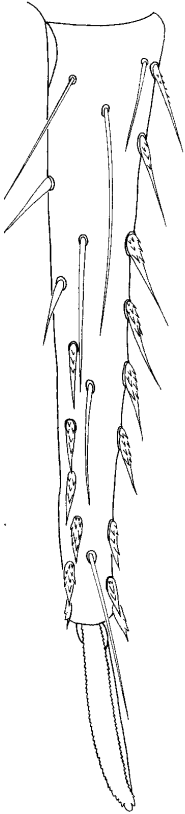


- 5 Ret with 4+4 teeth, setae of dens smooth, rough, or serrate ..... 6

- Ret with 3+3 teeth, most setae of dens clearly ciliate .....

.....*Gibberathrix* Uchida, 1952

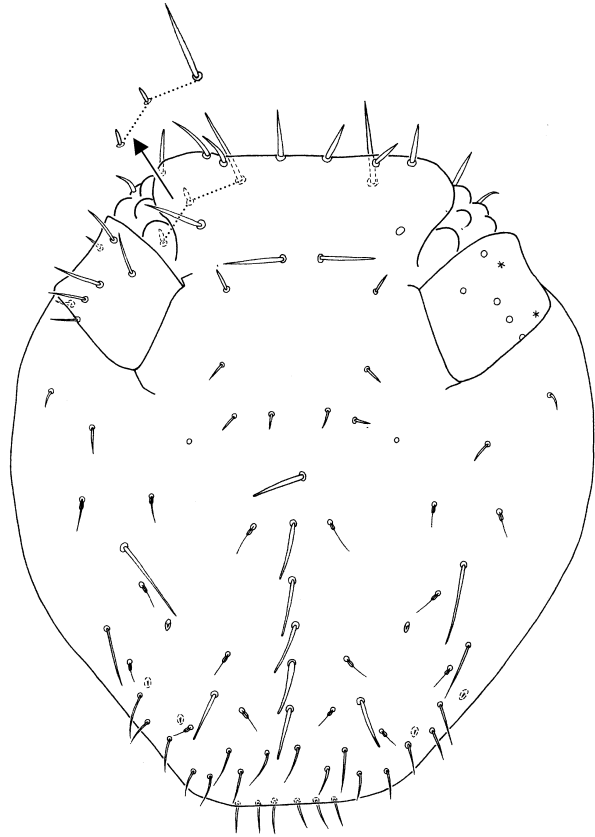
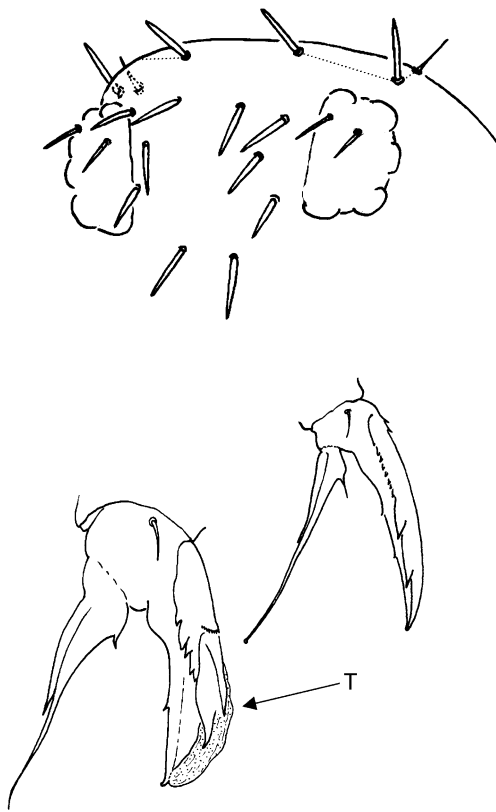
type species: *Gibberathrix tsugarensis* Uchida, 1952; Japan



- 6. Dorsal head-back with setal pairs 1 + 2 (or 1 - 3) modified to long spines; claws with tunica.....*Dicyrtomina* Börner, 1903  
type species: *Podura minuta* O. Fabricius, 1783; Europe
- Dorsal head-back with only setal pair 1 modified to slender spines, pairs 2 + 3 to short or minute spines; claws with or without tunica..... 7

2 spines and 1 short seta

1 spine and 2 short setae

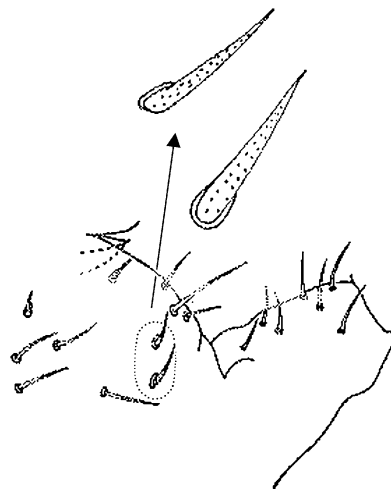
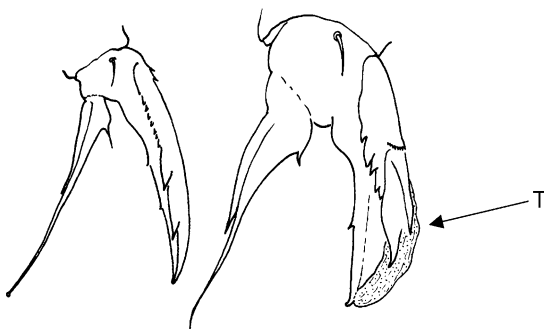


7 Claws without tunica, neosminthuroid setae missing, Abd VI dorsally often with thick spines ..... **Dicyrtoma** Bourlet, 1842

type species: *Papirius fuscus* Lubbock, 1873; Europe

- Claws with tunica, neosminthuroid setae (always?) present, Abd VI dorsally with only normal setae.....**Jordanathrix** Bretfeld & Arbea, 1999 in Bretfeld, 1999

type species: *Dicyrtomina articulata* Ellis, 1974; Greece



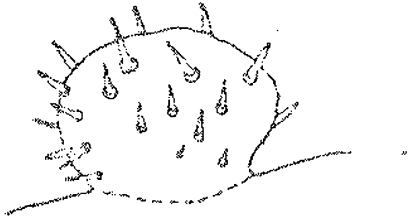
neosminthuroid setae  
of *Jordanathrix articulatus*

8 (4) Large abdomen of normal globular form, neosminthuroid setae present .....  
..... **Calvatomina** Yosii, 1966

type species: *Dicyrtomina (Calvatomina) cruciata* Yosii, 1966; India

- Large abdomen posteriorly with prominent protuberance with few pairs of short spines, neosminthuroid setae missing ..... **Pseudodicyrtomina** Stach, 1957

type species: *Dicyrtomina trukana* Uchida, 1944; Caroline Islands



protuberance of *Pseudodicyrtomina trukana*